

CONFLUENCE

Construction Budget + Methodology

The total estimated budget for the preparation, installation and removal of the warming hut is **\$11,500.00** broken down as follows:

1. Mold Materials (x10-15 sets of melamine molds and transport trays) - **\$1,500.00**
2. Labour (inc. prep, install and removal) - **\$10,000.00**

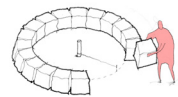
Step 1:

Gather snow from surrounding area, place into **melamine mold** and tamp down. Added moisture or a slurry mixture may be required (depending on weather conditions).



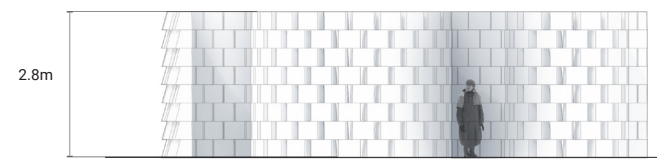
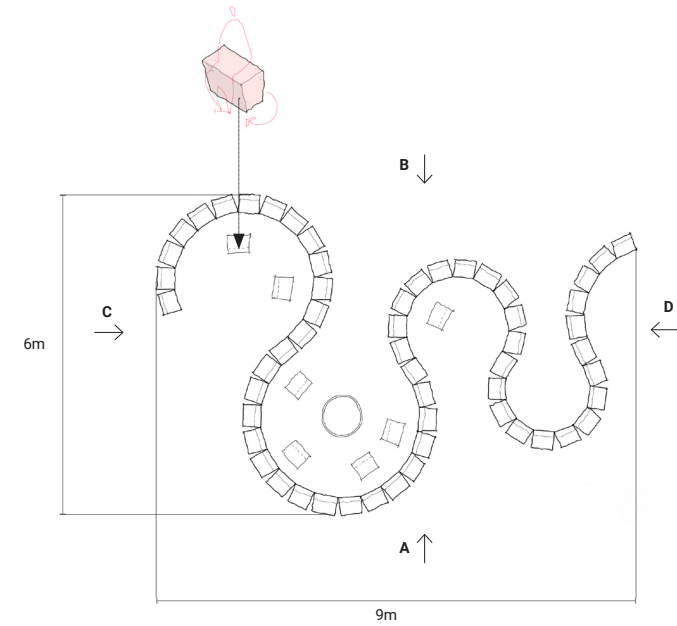
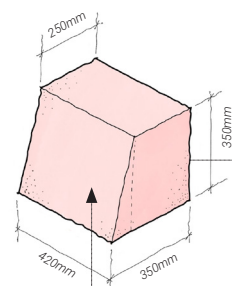
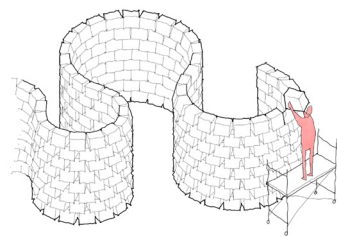
Step 2:

Release blocks from mold and arrange them along a series of prescribed arcs mapped on the ground to form the hut's perimeter. Use a **rope and central pin** to determine and mark these locations.

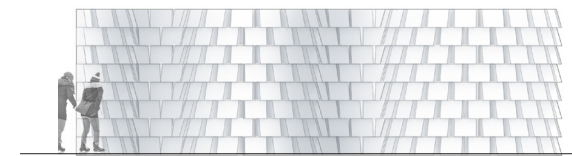


Step 3:

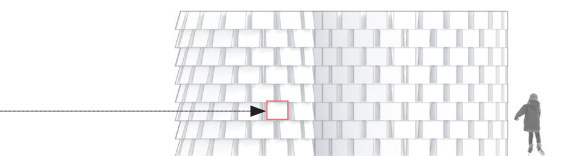
Stack blocks 8 courses high in a running bond pattern with use of **single stage scaffold**. Create additional blocks out of a high moisture mixture to use as benches. Proof of concept test build remained intact for 5 weeks.



A



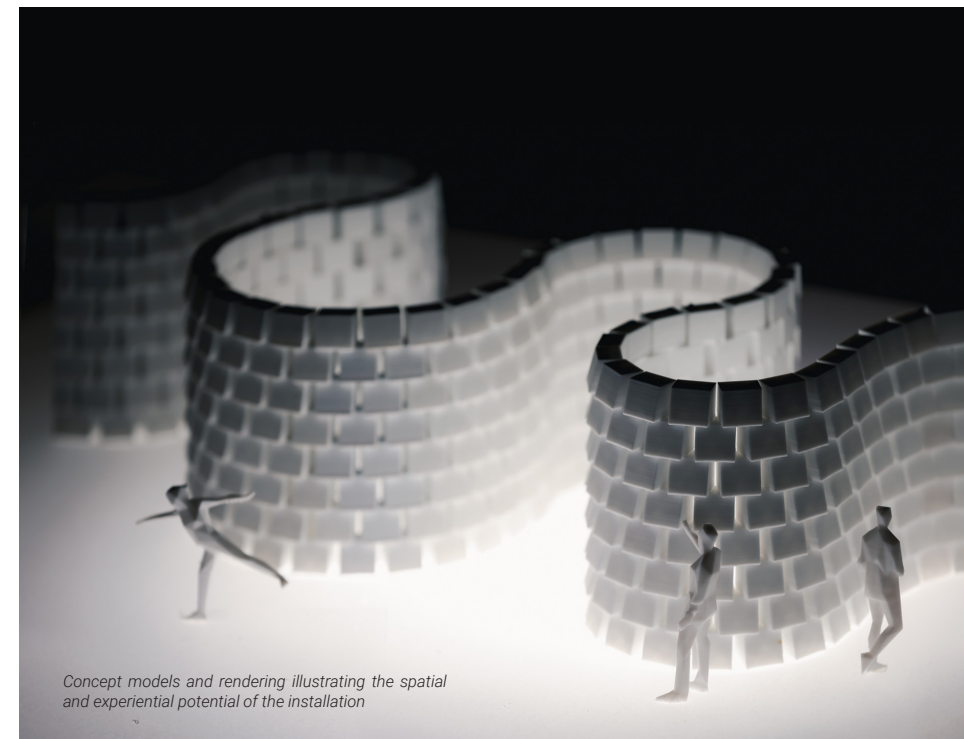
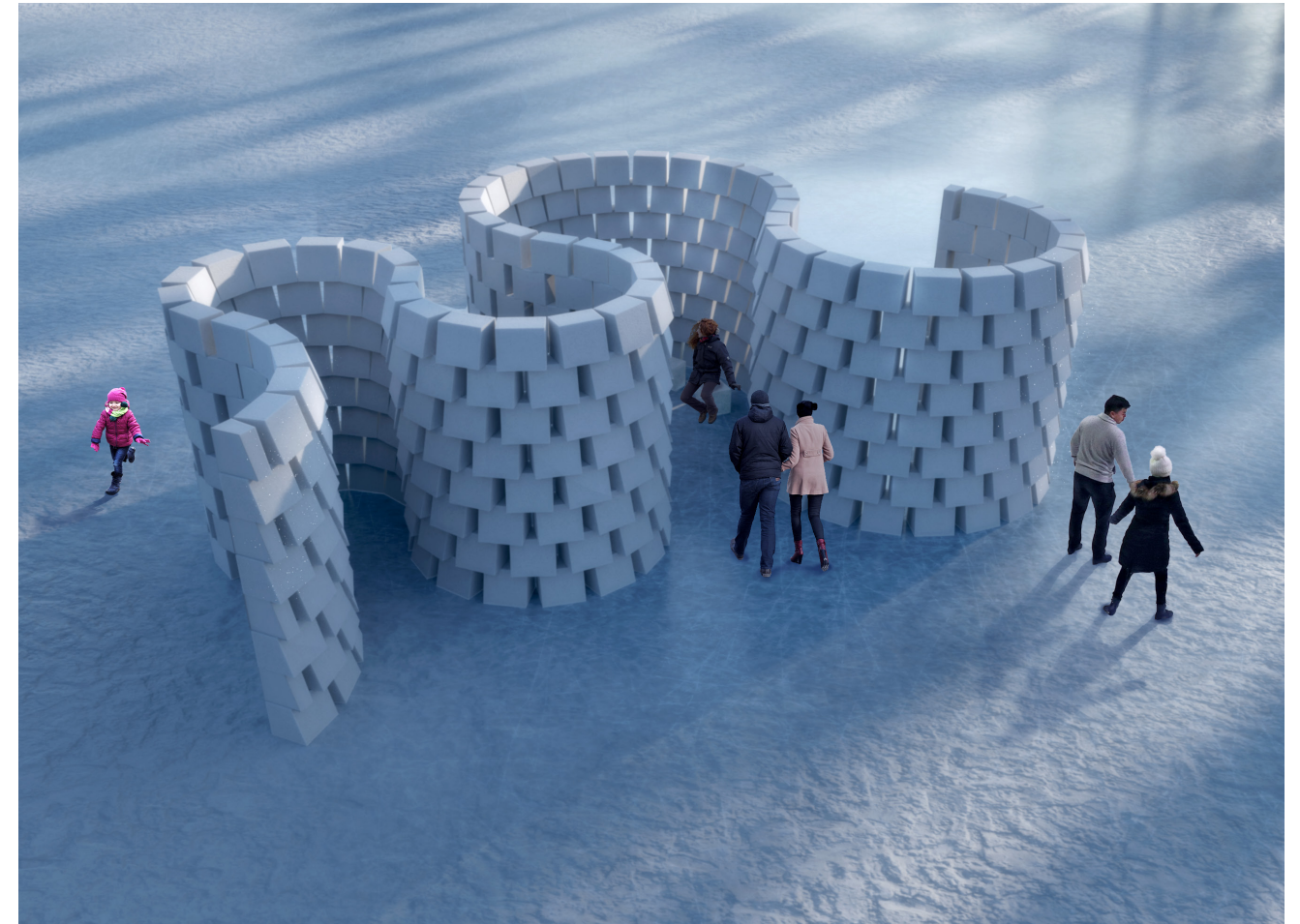
B



C



D



Concept models and rendering illustrating the spatial and experiential potential of the installation

