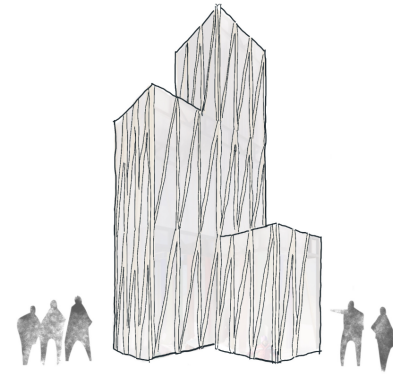


PAVILION OF HISTORIC (FABRIC)ATION

Inspired by traditional fabrication and vernacular architecture experienced across Western Canada, our installation invites the viewer into a playful exploration of three experiences.

Traversing through the hut takes you through a spatial adventure as the user is prompted to move through the space and experience changes in volume and components of play, while warming up from the outside.

In ode to the history of Heritage Park, the structure takes the overall form of a grain elevator, but using a modern approach of prefabricated modules to ensure quick fabrication time and sustainable use of materials. The installation is built with materials that will be re-used on construction sites after the festival, leaving truly no footprint behind. By pushing the notion of the hut as "form-giver" this adventure through the pavilion conveys the historic role of form and experience in heritage design.



↓ *The pavilion's translucent cladding glows in the winter context, contrasted with the warmth of wood.*

